

Ingresos, Términos y Penc

Arica	2000	2001	2002	2003	2004
Ingresos	7.248	7.385 -		3798	2.715
Fallos	7.303	7.089 -		4.339	2.540
Pendientes	172	468	289 -		740

Iquique	2000	2001	2002	2003	2004
Ingresos	8.102	7.927 -		4699	4.080
Fallos	8.112	7.853 -		7.191	2.410
Pendientes	167	241	479 -		3.689

Antofagasta	2000	2001	2002	2003	2004
Ingresos	10.605	9.886 -		3431	3.285
Fallos	10.508	9.982 -		11.157	3.450
Pendientes	439	343	560 -		476

Copiapo	2000	2001	2002	2003	2004
Ingresos	5.074	6.042 -		1239	1.527
Fallos	5.302	6.074 -		7.262	1.474
Pendientes	108	76	113 -		158

La Serena	2000	2001	2002	2003	2004
Ingresos	11.397	5.735 -		2768	3.556
Fallos	11.439	5.437 -		12.075	3.394
Pendientes	554	854	584 -		527

Valparaiso	2000	2001	2002	2003	2004
Ingresos	36.384	39.084 -		21700	15.552
Fallos	34.026	36.216 -		32.419	15.608
Pendientes	8.645	11.513	13439 -		15.111

Santiago	2000	2001	2002	2003	2004
Ingresos	104.913	113.391 -		58664	59.850
Fallos	100.067	101.072 -		51.259	55.598
Pendientes	33.367	45.686	48357 -		57.083

San Miguel	2000	2001	2002	2003	2004
Ingresos	7.726	8.412 -		24732	26.573
Fallos	6.842	9.372 -		43.104	27.434
Pendientes	6.357	5.397	7274 -		5.288

Rancagua	2000	2001	2002	2003	2004
Ingresos	13.032	14.381 -		8985	6.674
Fallos	12.910	14.370 -		13.725	6.467
Pendientes	699	710	906 -		1.044

Talca	2000	2001	2002	2003	2004
--------------	-------------	-------------	-------------	-------------	-------------

Ingresos	14.528	15.520 -		4332	4.315
Fallos	15.993	13.585 -		12.870	3.441
Pendientes	2.467	4.402	4223 -		5.593

Chillan	2000	2001	2002	2003	2004
Ingresos	9.457	7.351 -		4301	2.825
Fallos	7.074	7.280 -		6.257	2.718
Pendientes	342	413	457 -		600

Concepcion	2000	2001	2002	2003	2004
Ingresos	26.151	28.273 -		18478	11.570
Fallos	28.557	27.952 -		27.014	9.244
Pendientes	3.399	3.718	2894 -		5.956

Temuco	2000	2001	2002	2003	2004
Ingresos	14.048	6.377 -		3848	3.822
Fallos	13.569	7.159 -		11.837	3.543
Pendientes	2.204	1.424	1518 -		1.756

Valdivia	2000	2001	2002	2003	2004
Ingresos	10.911	10.966 -		7044	4.948
Fallos	10.871	10.958 -		9.798	5.062
Pendientes	461	469	298 -		439

Puerto Montt	2000	2001	2002	2003	2004
Ingresos	8.881	8.945 -		6290	4.700
Fallos	9.033	8.990 -		9.545	4.570
Pendientes	500	456	883 -		1.153

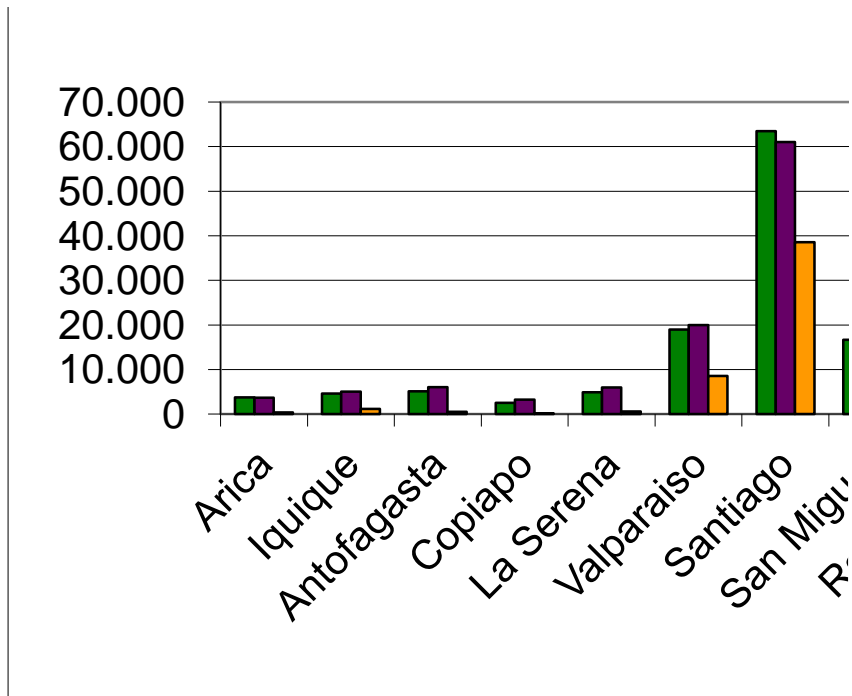
Coyhaique	2000	2001	2002	2003	2004
Ingresos	2.872	2.743 -		1187	728
Fallos	2.557	2.741 -		3.410	628
Pendientes	2	4	63 -		114

Punta Arenas	2000	2001	2002	2003	2004
Ingresos	3.364	3.680 -		1532	1.270
Fallos	3.314	3.657 -		3.207	1.339
Pendientes	122	145	232 -		153

Fuente: Memorias Anuales Poder judicial
INE

	Arica	Iquique	Antofagasta	Copiapo	La Serena
Ingresos	3.770	4.624	5.102	2.525	4.879
Fallos	3.657	5.018	6.052	3.258	5.950
Pendientes	406	1.152	545	137	579

Ingresos, Fallos y Pendien
(Fuente: Memor



Clientes Cortes de Apelacion

2005	2006	2007	2008	Promedio
2.472	2.362	2.087	2.095	3.770
2.263	2.078	1.790	1.856	3.657
949	282	173	175	406

2005	2006	2007	2008	
3.872	2.726	2.654	2.931	4.624
5.126	3.224	2.650	3.580	5.018
2.435	873	874	455	1.152

2005	2006	2007	2008	
3.307	3.367	3.198	3.735	5.102
3.215	3.222	3.101	3.780	6.052
568	661	716	597	545

2005	2006	2007	2008	
1.675	1.763	1.410	1.467	2.525
1.578	1.678	1.317	1.381	3.258
255	130	107	145	137

2005	2006	2007	2008	
3.778	4.079	3.983	3.737	4.879
3.620	3.960	3.987	3.686	5.950
685	534	455	439	579

2005	2006	2007	2008	
10.344	9.661	9.912	8.958	18.949
12.172	10.059	9.605	9.598	19.963
13.283	3.211	2.401	883	8.561

2005	2006	2007	2008	
54.657	41.389	35.731	39.021	63.452
56.683	41.085	38.916	43.347	61.003
55.057	29.231	23.512	16.204	38.562

2005	2006	2007	2008	
26.828	15.941	12.411	10.826	16.681
27.656	17.602	13.638	12.640	19.786
4.460	5.370	3.372	850	4.796

2005	2006	2007	2008	
4.305	4.356	4.927	4.493	7.644
4.753	4.014	5.028	4.763	8.254
596	1.006	772	520	782

2005	2006	2007	2008
-------------	-------------	-------------	-------------

4.052	4.431	4.598	4.793	7.071
4.770	4.308	4.640	7.264	8.359
4.875	5.277	5.038	1.600	4.184

2005	2006	2007	2008	
2.170	2.235	2.175	2.269	4.098
2.336	1.860	1.950	2.586	4.008
434	948	1.072	405	584

2005	2006	2007	2008	
9.054	8.898	9.470	8.396	15.036
7.475	7.588	9.120	9.852	15.850
7.535	6.929	5.667	3.453	4.944

2005	2006	2007	2008	
4.123	4.786	5.461	5.473	5.992
3.740	4.619	5.449	7.186	7.138
2.139	2.417	2.267	466	1.774

2005	2006	2007	2008	
3.253	3.788	3.634	3.408	5.994
3.274	3.649	3.530	3.465	6.326
418	310	308	347	381

2005	2006	2007	2008	
3.733	3.658	3.843	3.631	5.460
4.324	3.487	3.992	3.608	5.944
562	579	375	353	608

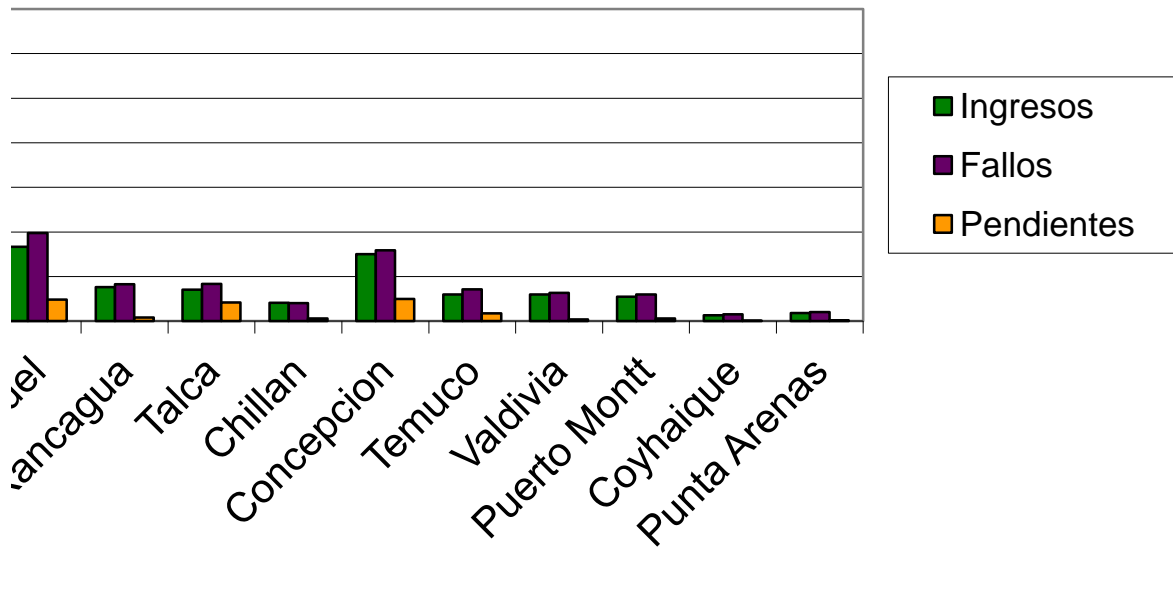
2005	2006	2007	2008	
636	715	841	948	1.334
575	604	782	907	1.526
175	43	40	89	66

2005	2006	2007	2008	
1.154	1.209	1.132	1.081	1.803
1.160	1.181	1.125	1.091	2.009
147	147	136	145	153

Valparaiso	Santiago	San Miguel	Rancagua	Talca	Chillan	Concepcion
18.949	63.452	16.681	7.644	7.071	4.098	15.036
19.963	61.003	19.786	8.254	8.359	4.008	15.850
8.561	38.562	4.796	782	4.184	584	4.944

ites Cortes de Apelaciones 2000-2008

(Cuentas Anuales Poder Judicial - INE)



Temuco	Valdivia	Puerto Mont	Coyhaique	Punta Arenas
5.992	5.994	5.460	1.334	1.803
7.138	6.326	5.944	1.526	2.009
1.774	381	608	66	153

|

]